

# THE KEY REPORTER

THE PHI BETA KAPPA NEWS MAGAZINE

VOLUME III · NUMBER 3

This Issue Goes to 80,000 Members

SUMMER · 1938

## 30,000,000 Philanthropists

ARNAUD C. MARTS,  $\Phi$  B K *Oberlin*

*Acting President, Bucknell University*

*Condensed from an article which will appear in the Summer '38 issue of The American Scholar*

OBVIOUSLY, the new governmental policies as to taxation have as one of their objectives a more even distribution of national wealth and income. It seems to be the intent to shift a larger proportion of the annual income to the mass of recipients in the lower brackets. If this succeeds, it would seem necessary that our voluntary institutions take cognizance of such a shift and build certain new financial policies around the altered income distribution.

The factual basis for the consideration of such new policies is to be found in a book recently published by Harper & Brothers, *The Measurement of American Wealth*, by Robert R. Doane. Mr. Doane states that during 1929 living supporters of voluntary agencies paid into the treasuries of our churches, hospitals, welfare, community, relief, civic and philanthropic societies by dues and gifts, the total of \$2,029,560,000. He estimates that persons with incomes of \$25,000 and over contributed 13½%; those with incomes from \$3,000 to \$25,000 gave 18½% of the aggregate; and those with incomes of \$3,000 and less gave 68% of the aggregate!

It would appear, therefore, that the burden, if it can be called a burden, of our entire voluntary philanthropic undertaking is not borne by the rich in any disproportionate degree at all, but is supported by the contributions and dues and offerings of approximately 30,000,000 people representative of all degrees of financial income. The voluntary endeavor, therefore, of the American people to lead the race forward through philanthropic undertakings is not the dilettante occupation of an upper rich class, but is a mutual coöperative mass effort of all the fine-grained

people of the nation, rich and poor, who make their gifts in accordance with their respective circumstances in life.

It is hoped, however, that our voluntary agencies may not lose the confidence and support of our wealthy men and women, even though they do gain from the increased support of the masses. They need and deserve the sustained and augmented generosity of all fine-grained persons, in all income categories. It is not too much to hope that they will experience added rather than diminished support, even from those upon whom new taxes fall the most frequently and heavily.

A large gift to philanthropy does not derive solely from a large bank account. The formula for philanthropy on a large scale is a large bank account plus a deep sense of social responsibility. Our voluntary colleges and churches and hospitals and other agencies have the opportunity to create an augmented sense of social responsibility which may more than compensate for the actual reduction of personal

*(Continued on page 8)*



## “For the Want of \$1—”

YOU can give the cause of scholarship in America \$80,000 by sending \$1 in the enclosed envelope.

Through 161 years of American prosperity and depression, Phi Beta Kappa has seen its prestige steadily increase. Its stamp of approval was never more highly prized than it is today by individuals and by institutions of higher learning. Nor has its encouragement ever been more needed by those concerned for the future of the

liberal arts college and student. Therefore, this special issue of THE KEY REPORTER is designed to give you the reasons for the support asked of you now.

The 100,000th  $\Phi$  B K member was initiated last spring. The living membership approaches 81,000. With 132 chapters electing 3,500 new members annually in widely differing colleges and universities constant care must be given to the

### In This Issue:

Judge Florence E. Allen  
Harry Emerson Fosdick

Owen D. Young  
John Erskine  
Louise Pound  
Roscoe Pound

Admiral Richard E. Byrd  
John Kirkland Clark  
Dorothy Canfield Fisher  
Ray Lyman Wilbur

James R. Angell  
John H. Finley  
Marjorie H. Nicolson  
Whitney H. Shepardson

Mildred H. McAfee  
J. Edgar Hoover  
Shailer Mathews  
James R. McCain

PUBLISHED BY THE UNITED CHAPTERS OF PHI BETA KAPPA in December, March, May and October, at the Rumford Press, Concord, N. H. Editorial and executive offices, 145 West 55th Street, New York, N. Y. Editor, William A. Shimer, Harvard  $\Phi$  B K; Assistant Editor, Dorothy E. Blair; Consulting Editor, Frank P. Graves, President of the United Chapters; Advertising Manager, Howard R. Sittler. Subscription 20 cents a year, \$1.00 for five years. Entered as second-class matter at the post office at Concord, N. H., under the Act of March 3, 1879.

POSTMASTER: if undeliverable at your office and addressee's new address is known, please forward, rated with postage due to cover forwarding charge. Undeliverable copies should be sent to:

PHI BETA KAPPA, 145 West 55th Street, New York, N. Y.  
Forwarding and return postage guaranteed.

www.pbk.org

maintenance and improvement of standards if the key is to retain its unique significance.

Through the election of members and through contacts with the hundreds of institutions of higher learning endeavoring to qualify for the establishment of chapters,  $\Phi$  B K is quietly but effectively strengthening the broad, liberal, cultural emphasis in American education and life. The 100 graduate associations, the Society's distinguished quarterly, *The American Scholar*, the 300 lectures sponsored annually, and the prizes, fellowships, and other forms of recognition bestowed upon secondary and college students and upon graduates, all contribute to the development of scholarship and breadth of interests.

Phi Beta Kappa members are being encouraged to continue their liberal education and scholarly productivity throughout life. A leaven of 80,000 such persons has a tremendous influence in a nation, as exerted by the members individually and through chapter and graduate organization.

The United Chapters promotes study of: criteria of scholarship and of breadth of interest which may be used to supplement course marks in determining eligibility for membership; the meaning and status of liberal education, and ways of encouraging scholarship; the member's continuing interest in education, creative scholarship and general culture. Results already manifest include the placing of less emphasis on marks and more upon vital scholarship, wide interests and intelligent leadership; and also the adoption of a procedure for careful appraisal of institutions seeking chapters and for the suspension of chapters where standards have deteriorated.

The local chapters bestow membership, but responsibility for efficient general standards and administration resides in the United Chapters. The investigation of colleges, information-service to all members and groups, publication of *The American Scholar* and THE KEY REPORTER, issuance of a bulletin for chapter and association officers, maintenance of correct membership records and address lists for 81,000 members with the addition of 3,500 new names each year, handling of about \$22,000 worth of key orders annually, speakers service for chapters and associations, meetings of committees and the Senate and the triennial Council, large general correspondence and innumerable office duties, make increasing demands upon

## To the Members of $\Phi$ BK

From time to time during the last few months I have been writing to a few of the members of  $\Phi$  B K explaining to them that the income from our invested funds was diminishing owing to the lower interest trends and that we should have not less than \$100,000 of additional capital funds in order to sustain the important work in which  $\Phi$  B K is engaged.

I have been greatly encouraged by the spirit of the responses. Running through many of them, however, sometimes expressed or frequently implied, is the inquiry why, with 80,000 members, should I be asking a few for such substantial sums — why not ask the membership as a whole to respond with contributions from \$1 to \$5 and then, if

the resources of the United Chapters. At the same time the annual income has decreased and is now about \$5,000 lower than in 1932, owing largely to a reduction in interest from the \$268,422 endowment.

The Society has been enabled by the gifts of a few members in the last two or three years to avoid serious curtailment in its work, but the Senate and Trustees believe that sound policy now requires the addition of at least \$100,000 in capital funds if the budget is to be balanced by income from endowment rather than through current contributions.

The Senate recently voted to invite each member to pay a voluntary assessment of \$1 toward the fund needed. A general response will build up the endowment, obviate the use of these contributions for current needs and make annual appeals unnecessary.

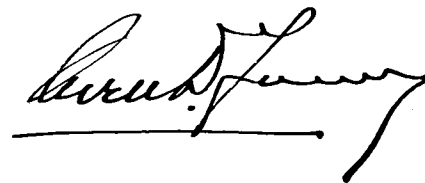
THE KEY REPORTER costs only about 1¢ a copy to print and mail in issues of 80,000; perhaps overhead costs add another 1¢. Since for a total cost of 8¢ a year every member of  $\Phi$  B K can be given 32 pages of information about his Society, its history, purposes, and activities; about the numerous and rapid changes taking place in the realm of liberal education and scholarship; about young members seeking positions, and about many of the best books being published; every member has a present incentive to send his or her \$1 toward the support of this and the other work of the Society.

Plans for THE KEY REPORTER promise future issues of still more interest and value. The many statements in this issue by persons known to you, tell

more is needed, ask a few for larger contributions?

I confess to the feeling that there is no answer to that except to make the request of the membership for such small contributions. If each of you will respond now with such an amount as you can conveniently give, it will provide the foundation for a justifiable request to others for larger sums. The interest of the membership, however, must be shown. Will you help  $\Phi$  B K, and those of us who are trying to finance it adequately, to that extent?

Sincerely yours,



you of the other important activities and services of the Society. Won't you, on the strength of this evidence of much service at little cost, send your \$1 now? Just put a bill, or a check or money order made out to the Treasurer of  $\Phi$  B K, in the enclosed envelope — no stamp needed — and mail now. A unanimous support will lend great encouragement.

Ray Lyman Wilbur,

*President, Stanford University:*

“IT TAKES a smart rat to find his way in a complicated maze. Our civilization is getting to be such a maze that one often gets the impression of fog rather than paths as he tries to move about. More and more trained brains are required if the creations of civilization are to function and not fall. Any organization that puts a premium on the use of brains is vitally needed if democracy is to be guided and is to remain useful. There is a real mission for the  $\Phi$  B K folk to keep each other informed, stimulated, and inspired to do the most possible public service of the best quality.”

Wellesley's President,

MILDRED H. McAFEE:

“ $\Phi$  B K seems worthy of support as an agency which undertakes to make scholarship reputable in a day which desperately needs the scholar but often repudiates him.”

# \$1,500 ΦBK Award

MARJORIE H. NICOLSON, ΦBK

Michigan

Dean, Smith College

RESEARCH fellowships for women are still rare enough that the addition of one made possible by a gift to Phi Beta Kappa is a matter of moment. In 1934 Miss Isabelle Stone left to the United Chapters a bequest to be used for the establishment of a fellowship for a woman scholar. Through the Mary Isabel Sibley Fellowship — named in honor of her mother — Miss Stone has passed on to other generations of women the pleasure and profit she herself found when, as holder of the Alice Freeman Palmer Fellowship, she spent a year in Europe, particularly in Greece, carrying on her study of Greek language and literature.

According to the terms of Miss Stone's bequest, the Mary Isabel Sibley Fellowship is to be awarded alternately in the fields of Greek and French. Both fields, however, are broadly interpreted, for the fellowship may be used for the study of any aspect of French language or literature, or for the study of Greek language, literature, history or archeology.

At the meeting of the Senate in December, 1937, specific recommendations for the administration of the fellowship were presented by the committee which had been earlier appointed. It was decided that the first award of fifteen hundred dollars will be made in March 1939, and that the fellowship for the present will be awarded in alternate years, until such time as the income permits an annual award. Candidates must be unmarried and between the ages of twenty-five and thirty-five, and must have demonstrated their ability to carry on original research. While the doctor's degree is not an absolute requirement, it is expected that the fellowship will be used for research, not for the completion of the academic requirements for degrees. It is the hope of the committee that the results of the year of research will be made available in some form, though no pressure for publication will be put upon the recipient of the fellowship.

Applications for the fellowship should reach the Executive Secretary of the United Chapters not later than February first next. Since this is the first year of the award, candidates in both fields may apply. Announcement of the successful candidate will be made as soon as possible after March fifteenth next.

# The Barometer of ΦBK

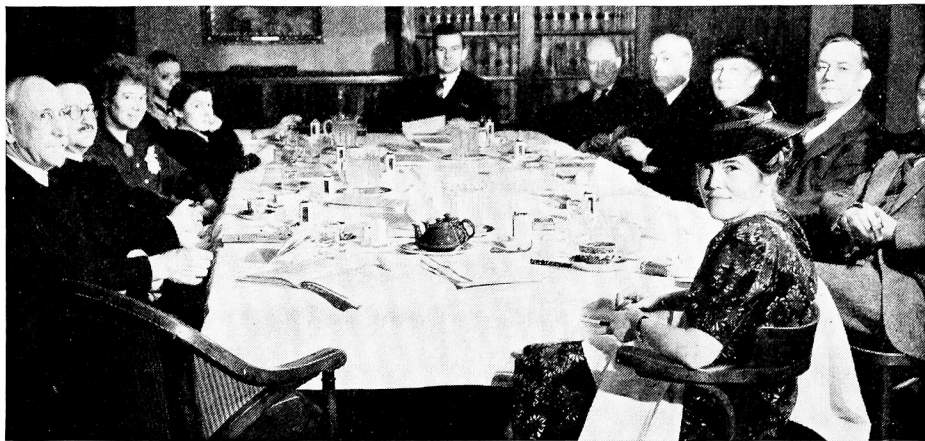
JOHN ERSKINE

WHAT are the intellectual interests of ΦBK men and women after they leave college? We could come at the answer by wide investigation, or we could provide an avenue of expression for at least some of those interests in a single convenient publication.

There are journals for the reports of scientists and specialists in all fields, and there are more than enough magazines for popular entertainment, but we have

can exhibit to our critical fellows and to the critical general reader what kind of thoughts occupy the hoped-for leaders.

These considerations and others like them prompted the establishing of *The American Scholar*. The experiment has justified itself, but it needs a further and more vigorous development, which must come not from the editors but from the contributors. A temptation which always lurks for the cultured is the affect-



THE AMERICAN SCHOLAR BOARD AT A REGULAR 4-HOUR QUARTERLY MEETING

President William Allan Neilson, Smith; Dr. John Bakeless of the *Literary Digest*; Mrs. Irita Van Doren, *Literary Editor of the N. Y. Herald Tribune*; Miss Irene Blayzor, stenographer; Miss Beryl Williams, Ass't Editor; Dr. William A. Shimer, Editor; Dean Christian Gauss, Princeton; Chancellor Harry Woodburn Chase, New York University; Mrs. Mary Kingsbury Simkhovitch, Director, Greenwich House; Dr. Dumas Malone, Director, Harvard University Press; Dr. J. Herman Randall, Columbia; Miss Ruth E. Campbell, Associate Editor. (Not present: Dr. John Erskine, author, President of Juilliard School of Music; Dr. Will D. Howe, Editor, Charles Scribner's Sons; Dr. Burton E. Livingston, Johns Hopkins; and Mr. Archibald MacLeish, poet.)

too few publications which serve thoughtful people who are not specialists and who yet would find profit in the competent discussion of questions scholars are now trying to solve.

If ΦBK were merely an undergraduate honor society, the key would be enough to display, but since we believe the election to membership is in some sense an attempt at prophecy, a selection of those likely to demonstrate mature qualities of leadership, it is well to have a little parade ground where we

tionate disposition to cherish the past, while recoiling a little from the present. Too often the unscholarly are more aware of the future than those who have the training to shape it.

*The American Scholar* is the barometer of our Society's value to the country. It should indicate the best results of our educational effort. It should warn us if our minds are at all flabby or stodgy or lazy. It should direct our attention to whatever horizons now challenge the intelligent.

THE AMERICAN SCHOLAR  
145 W. 55th Street, New York, N. Y.

I enclose, for an American Scholar subscription,  \$2 for 1 year.  \$3.50 for 2 years.  \$5 for 3 years.

Name.....

Street.....

City..... State.....

KR-Su-38



# If It Isn't One Thing, It's Another —



William Allison Shimer, Harvard '18, Ph.D., LL.D. Secretary of the United Chapters and  $\Phi$  B K Foundation, Editor of *The American Scholar* and *THE KEY REPORTER*.

Dorothy E. Blair, Skidmore College, assistant to the Secretary, Assistant Editor of *THE KEY REPORTER*; conducts chapter speakers service.



Hope Shelley, Oregon, Assistant Treasurer, business manager.

Florence E. Pfaff, Hunter; secretarial work, proof reading.

Alice Dabelstein (14th year in the office), key orders, American Scholar subscriptions, chapter records.

Beryl Williams, New Jersey College; Circulation Manager and Assistant Editor of *The American Scholar*.

## New Attitude on the Campus

SHAILER MATHEWS,  $\Phi$  B K Chicago  
Dean Emeritus, Chicago Divinity School

I WAS recently talking with a college graduate who had become a successful financier. When asking him about his family, I found that he was apparently proudest of the fact that one of his sons had become a member of  $\Phi$  B K. This reminded me of a number of other incidents, and I suddenly realized that there is developing a new attitude in colleges towards distinction in scholarship. While a good many people prefer "going to college" to getting an education in college, there is a developing group of students who realize that there is no disgrace in getting recognition as good students.

I believe that this appreciable revival of interest in scholarship is in no small degree due to the work of the United Chapters. The Phi Beta Kappa Associations of various centers show how this interest persists after members of various chapters have graduated.

*THE KEY REPORTER* is to be congratulated on its pushing of the campaign for democratic support of the United Chapters. Anyone who has visited the Society's headquarters will appreciate how important and extensive are the services rendered to the chapters in the colleges of the country.

$\Phi$  B K has helped to uphold cultural and educational standards in a period when athletics and vocational training has threatened to undermine them.—George J. Hecht.

## The Liberal Front

WHITNEY H. SHEPARDSON,  $\Phi$  B K  
Colgate  
Vice-President, International Railways of Central America

SINCE the tide of the times is running strongly against the intangible values that  $\Phi$  B K stands for, it seems more important than ever to put up a fight to preserve them.

*THE KEY REPORTER* goes to every known living member of  $\Phi$  B K. It is the one and only way in which the common interest of these 80,000 men and women in the liberal life can be maintained.

This number of *THE KEY REPORTER* has been given over to just one purpose — to get money enough to keep on publishing it. One dollar from each member will provide a fund to do it for some time to come.

What we need these days is not Communism or Fascism or any other kind of "front" — except a Liberal Front, eighty thousand strong. Your dollar will help build it.

## Dorothy Canfield Fisher:

"IN A country like ours where the rewards of money and influence go so largely to commercial efficiency and success, there is a special reason for honoring and strengthening the prestige and power of abstract intelligence. Not only members of  $\Phi$  B K but every intelligent American citizen who desires a civilized country to live in, has a reason to support this organization, the sole purpose of which is to uphold high standards of intellectual achievement."



Ruth E. Campbell, Wellesley, Associate Editor of *The American Scholar*.

## The Patriarch

LOUISE POUND,  $\Phi$  B K Nebraska  
Professor of English, Nebraska

$\Phi$  B K, the patriarchal society of the Arts College, is the earliest and most distinguished of American organizations bearing Greek-letter names. By our time it has seen hosts of imitators spring up, social, departmental, professional, church, and "honorary," in academic and non-academic circles. Among this vast alphabetical progeny  $\Phi$  B K has moved calmly on, with the aura of age and dignity about it. And the Society deserves its prestige. Its members are elected not for reasons of social congeniality or for expediency, but for liberal cultural attainments and for intellectual ability well-employed. It has a remarkable number of noted names on its rolls.

Let me add: I think *THE KEY REPORTER* an attractive and interesting publication and hope the  $\Phi$  B K Society will continue to issue it.

Gifts and bequests to  $\Phi$  B K are deductible for income tax purposes.



Irene Blayzor, Syracuse University; switch-board operator, file clerk, stenographer.

Virginia Reid, secretarial work, proof reading.

Sarah Mitchell, general assistant — key orders, subscriptions, membership records, chapter lists.



William Uetterling, mimeograph operator and mail clerk.

Loretta Henfling (12th year in the office) and Evelyn Leuck, addressograph operators, maintain membership files of 103,000 names and 80,000 addresses.

## Graduated and Forgotten?

JOHN H. FINLEY, ΦBK Knox  
Editor-in-Chief, The New York Times

I WISH to congratulate the Society upon the establishment of a news quarterly which for the first time gives all ΦBK members a medium of general information. No longer is the student elected, initiated, graduated and forgotten. No longer is he permitted to forget the significance of his membership.

I hope THE KEY REPORTER will continually remind you that your key is less a decoration of honor than a mark of responsibility. Phi Beta Kappa's advocacy of the liberal college and the cultural attitude toward learning and life is active and positive. Your support of that attitude should be active and positive also.

Therefore I urge you to read THE KEY REPORTER regularly and to assist us in its development and in the pursuit of its purpose. It will tell you what the Society is already accomplishing — a scope of achievement which may surprise you — and of what it means to do. Significant articles will keep you up-to-date in the field of liberal education and American culture. Think of the magazine as your own — submit material to it — read it — criticize it.

I join with others in urging you to help us maintain and improve THE KEY REPORTER and the other work of the Society. The act of the moment which would give real assistance and encouragement consists merely in sending your \$1 toward the \$100,000 we need to restore the Society's annual income to the 1930 level.

## James Rowland Angell,

Until recently President of Yale, Educational Director of N.B.C.:

"I TRUST you will be more than successful in your appeal for a dollar contribution from the 80,000 members of ΦBK in order to make possible the work of the United Chapters.

"There has never been a time when we more needed a detached and scholarly understanding of civilization and the common life. ΦBK is one of the few historic organizations which are explicitly dedicated to the development of disinterested intelligence. It would be a calamity to have its usefulness materially curtailed by acute financial need."

## Admiral Richard E. Byrd,

ΦBK University of Virginia:

"IN THE complexity of city life today, as well as in the barren stretches of Little America, I have been impressed by the inner resources of the liberally educated man. When events press closely about him, or when days go by in a round of petty, insignificant chores, he has a comforting recourse to the experiences of the mind.

"ΦBK has an opportunity today to save and strengthen the liberal college whose function it is to produce these liberally educated men. I hope the Society will find the courage and resources adequate to this opportunity — and thus continue to make its own unique contribution to American life."

## How a College Gets ΦBK

JAMES ROSS McCAIN, ΦBK

Agnes Scott

President, Agnes Scott College

ΦBK does not undertake a policy of standardizing colleges. It lays down no specific requirements for admission. It has no word of exhortation or of reproof for institutions that fall below the recognized qualities. It deals only with those colleges or universities which grant degrees in the liberal arts and sciences; and it does not undertake to instruct them as to what they ought to be or to do, but rather to appraise what they are already accomplishing.

While definitely not a standardizing agency, the United Chapters exercises a profound influence on the establishment and maintenance of true scholarship and of scholarly ideals not only within the ΦBK membership, but throughout the whole field of higher education. When an institution is examined for membership, the procedure calls for such a degree of self-analysis that weaknesses and shortcomings become apparent to any truth-seeking administrator.

For the last six years, the United Chapters has used for its study of college achievement and worth a Committee on Qualifications consisting of six members. These are distinguished educators, keen in their understanding of values and yet kindly and sympathetic in dealing with individuals and with institutions. For the current triennium, the following constitute this most important committee: President David Allan Robertson, Goucher College, Chairman; Dean George H. Chase,

Harvard University; Dean Guy Stanton Ford, University of Minnesota; President Theodore H. Jack, Randolph-Macon Woman's College; Dean Charles B. Lipman, University of California; and President Raymond Walters, University of Cincinnati.

In my opinion the work of this Committee has been the outstanding contribution of the United Chapters during the last six years. It is hard for anyone to realize the amount of painstaking labor involved. The report to the Council in Atlanta was based on a study of factual material occupying more than 17 feet of filing space, and the personal interviews and investigations and discussions are more time-consuming and difficult than the written materials.

It seems to me that the alumni of our various  $\Phi$  B K institutions should take a keen interest in the work of the Committee on Qualifications. It represents the influence of our Society on higher education in the United States. Its program and its success afford tangible reasons why the United Chapters should receive financial support in its efforts for *quality* in the educational programs of our day. Few members who understand what is achieved through this and other committees will hesitate to contribute their share.

### Harry Emerson Fosdick:

"I DEEPLY sympathize with the appeal being made through THE KEY REPORTER in the interest of the work of the United Chapters of Phi Beta Kappa. At a time when intellectual leadership is so deeply needed in this country there is a place for the unique contribution which these United Chapters together can make. The amount needed from each of our 80,000 members is so small that there seems no excuse for a failure in the campaign now being made. Certainly, it deserves a widespread and loyal support."

### Every Man an Officer

ROSCOE POUND,  $\Phi$  B K *Nebraska*  
Former Dean of the Harvard Law School

TO LOOK at things *sub specie aeternitatis*, and not be swept off in the current of fashionable thought of the moment, even if only a remnant can succeed in doing it, is vital where there is no leader with authority to tell people what they must think, but the public are like Artemus Ward's military company — every man an officer and the superior of every other. The best guarantee of a long view of things is in liberal education. But liberal education, like the type of thought it makes for, has to contend with strong currents of transient fashionable thinking, and is today sore beset by the demands of vocational and professional training, and the pressure of those who think of information on all conceivable subjects as the end of education, and that no one can know anything unless he has had formal training in it.

$\Phi$  B K is one of the chief supports of liberal education and scholarship in America. The work it is undertaking in the study of the position of liberal arts and sciences in our institutions of learning with a view to guiding and strengthening that support, is but one phase of a continuous activity which deserves the best backing that the teachers and scholars of America can give the Society.

NOTE.—Dean Pound is Chairman of a  $\Phi$  B K Committee on the Status of the Liberal Arts and Sciences in American education. The report of this Committee is awaited eagerly by the friends of the liberal arts college. Both the Association of American Colleges and the American Philosophical Association, Eastern Division, have adopted resolutions commending the study.

### Chief of the G-Men,

J. EDGAR HOOVER:

"EXPERIENCE has demonstrated the value of trained intelligence. It is represented in its highest degree among the wearers of  $\Phi$  B K keys. Honorary scholastic societies are an added incentive to one to make the most of his opportunities in college days, and it always has been a source of deep regret to me that my Alma Mater, George Washington University, did not boast of a chapter of  $\Phi$  B K prior to my graduation."

### Judge Florence E. Allen:

"I AM sending in my dollar now to the  $\Phi$  B K Society. I wish that it were many more dollars. To me the  $\Phi$  B K magazine is one of the outstanding publications of the country, stimulating, scholarly, and covering a wide range of subjects. In a life in which it is very difficult to read because I do so much of my work by reading, I try never to miss the  $\Phi$  B K quarterly. The Society does many other things than this, but I mention the quarterly as one of its outstanding achievements."

#### For scholars and thinkers — "Investment under the Dow Theory"

A new treatise, the most complete published on exactly how to use the findings of the "Dow Theory" — a forecasting device for fifty years successfully used by a few, 37,000 words of original analysis more important to you than Einstein's. Explains four methods of stock and bond investment, three of trading, the bearing of the Theory on each, the habits that bring loss. Most investors lose part or all of their capital before they learn sound methods. Therefore, send \$2 for your copy, or write for description. Dudley Kimball, *Publisher of Research on Improved Methods of Investing and Trading*, Parsippany, New Jersey.

Whoever has (or will have) money, needs this book.

## IN EUROPE • MEXICO • SOVIET UNION

you will see more than  
tourist sights with

### THE OPEN ROAD

Small travel groups recruited from the professions — authoritative leaders assisted by cultured native guides — social contact with people of each country.

DENMARK, SWEDEN, NORWAY, under leadership of Prof. Hartley W. Cross. Cities and countryside including Norway's fjords and mountains. Study of cooperatives and folk schools. Sailing July 1. Back Aug. 29.

ITALY, TURKEY, SOVIET UNION and GERMANY, under leadership of Prof. Goodwin Watson. A contrasting study of the psychology of social change. Sailing June 29. Back Sept. 2.

FOURTH ANNUAL TRAVEL COLLECTIVE IN THE SOVIET UNION, under leadership of Dr. Joshua Kunitz. Leningrad, Moscow, Ukraine, Caucasus, Soviet Armenia, Crimea. Sailing July 6. Back Sept. 1.

"INSIDE EUROPE." Auspices American Student Union. France, Austria, Czechoslovakia, Soviet Union, Finland, Sweden, Denmark, England. For college students only. Sailing July 2. Back Aug. 22.

MEXICO, under leadership of Julien Bryan. More than a month in the cities and native villages. Sailing July 14. Back Aug. 23.

For rates and descriptive circulars on these and twenty other trips address:

## THE OPEN ROAD

Dept. 26

8 W. 40th ST.

NEW YORK

Cooperating in the Soviet Union with Intourist



### UNIVERSITY SCHOOL

SHAKER HEIGHTS, OHIO

A Dormitory and Day School  
for Boys from Six to  
College Age

Since 1890, University School Students have made remarkable records both in Board examinations and in achieving Phi Beta Kappa recognition. Catalog sent on request.

Dr. Harry A. Peters

Headmaster

# Know of an Opening?

If name is not given, address Member No. —, care of THE KEY REPORTER.

### CHEMISTRY

- 111. Rubin Bernstein, 970 56th St., Brooklyn, N. Y. B.S., C.C.N.Y. '37; majors, chemistry, biology.
- 120. Aaron Levine, 130 Callender St., Dorchester, Mass. B.S., Tufts '37 (Φ B K '36). Wants also teaching, secretarial.

### COMPANION, HOME MANAGEMENT — See also 92

- 41. (Miss, S. D.) A.B., Northwestern '13; M.A., Univ. of Washington '31; majors, English, classical languages. Exp. — teaching. Gave up position because of defective vision; accept modest salary. Wants also tutoring.

### EDITORIAL, PUBLISHING — See also 78, 127

- 137. Mary Kirsten, 609 W. Main Cross St., Findlay, Ohio. A.B., Univ. of Wisconsin '35; majors, economics, literature; graduate work, Columbia. Exp. — office, research, radio script.

### LAW

- 71. (Mr., N. J.) B.S., Lehigh '29; LL.B., Fordham. Admitted N. J. Bar '33. Exp. — banking, law. Wants also teaching.
- 94. Joseph Farinelli, 2003 Crotona Ave., N. Y. C. A.B., C.C.N.Y. '34; LL.B., Fordham '36. Admitted N. Y. State Bar '36.
- 138. Simon Miller, 519 W. 7th St., Long Beach, Calif. A.B., Minnesota '32; LL.B., Univ. of California '37. Admitted California Bar. Exp. — 4 yrs. on newspaper.

### RESEARCH — See also 92, 142, 143, 123, 145, 146, 147, 117, 78, 128

- 95. (Miss, N. J.) A.B., Smith '30; M.A., Columbia '32; majors, physics, mathematics. Exp. — teaching, secretarial, clerical, research in science. Wants also teaching.

### SECRETARIAL, BUSINESS — See also 120, 21, 78, 127, 128

- 92. (Miss, Brooklyn) M.A., Brown '06. Exp. — stenography, research. Wants also research, home management.
- 139. Marjorie Dempsey, 151 Stour Ave., New Rochelle, N. Y. A.B., Stanford '37; major, Latin; minors, French, education; business training. Exp. — switchboard operator.
- 119. (Miss, Brooklyn) A.B., Hunter '37; major, history; minors, economics, political science. Exp. — sales clerk.
- 100. (Mr., Pa.) A.B., Franklin & Marshall '32. Licensed airplane pilot. Exp. — accounting, business, statistics.
- 140. Elisabeth O'Neal, Bainbridge, Ga. A.B., Univ. of Georgia '35; majors, history, psychology. Exp. — 2 yrs. office work; 1 yr. teaching. Wants personnel work in office or college.

### TEACHING, TUTORING — See also 120, 41, 71, 95

- 141. (Mr., N. Y. C.) A.B., Princeton '33; Zurich and Munich '34-'35; Ph.D., N. Y. U. in Oct. Exp. — 4 yrs. teaching.
- 60. (Mr., N. Y.) Wisconsin '17; Ph.D. '20. Exp. — 14 yrs. teaching Latin, Greek, modern languages, history.
- 142. Clifford H. Colpitts, 510 Oak St., Pullman, Wash. B.S., Washington State '33; M.S. '34; majors, physics, mathematics; minor, chemistry. Wants also research.
- 21. Rita Crom, Dell Rapids, S. D. A.B., South Dakota '30; majors, English, education. Wants also clerical work.
- 143. (Mr., Chicago) Chicago '25; Ph.D. '28; major, physics; foreign study. Exp. — 6 yrs. teaching; published books and papers. Wants teaching with research opportunity.
- 123. (Mr., Ark.) A.B., Indiana Univ. '05; A.M. '07; Ph.D., Univ. of Michigan '09; majors, English, psychology. Exp. — 20 yrs. univ. teaching; published articles, books. Wants also research.
- 144. George B. Kross, Collins Ave. & 4th St., Miami Beach, Fla. A.B., Univ. of Alabama '37; major, history; minors, English, social sciences, political science, education.
- 26. Lucille Langworthy, 221 E. Walnut St., Titusville, Pa. A.B., Allegheny '25; M.A., Middlebury French School '29; studied at Western Reserve, Sorbonne, Institut de Phonétique de Paris. Exp. — 9 yrs. teaching French, English.
- 125. Charlotte Leonard, Troy, Pa. Syracuse '36; A.M. '37, major, Latin; minor, English; courses in archaeology, physics. Exp. — sub. teaching. Wants also work in museum, bookstore.
- 145. Carl A. Ludeke, 4738 Doberger Ave., Cincinnati, Ohio. A.B., Cincinnati '35; honors in physics; Ph.D. in June. Exp. — ½ yr. teaching physics. Wants also research.
- 146. E. Elizabeth Moore, 208 W. 12th St., Hays, Kans. A.B., Washburn '31; A.M., Univ. of Kansas '36; majors, English, Latin. Exp. — 6 yrs. teaching. Wants also research, library.
- 147. Charles E. Packard, 8 Mayo St., Orono, Me. Bates '19; M.S., Yale '24; receive Ph.D. soon. Exp. — college teaching; minor publications. Wants teaching-research in biology.
- 117. Floyd A. Reinhart, 84 Hawthorne Ave., Hamden, Conn. A.B., Bard '33; assistantship '34-'35 in sociology, Yale; courses in education, statistics, Yale. Exp. — office, Y.M.C.A. work. Wants also work in social service, social research.
- 78. (Mr., N. Y. C.) A.B., C.C.N.Y. '36; majors, English, education, Latin; grad. stud., Columbia. Exp. — research, 2 yrs. teaching. Wants also library, clerical, research, publishing

# Graduated, Not Forgotten

JOHN KIRKLAND CLARK, Φ B K Yale  
President, New York State Board of Law Examiners

THE underlying theme of Φ B K is peculiarly applicable to its members after they leave college halls. In the strenuous work of making a living, if membership in Φ B K is to be anything but an empty honor, it should operate effectively in the lives of graduates.

The ideals of Φ B K should be kept constantly before all its graduate members. In many places and for many years, this has been accomplished to a marked degree by the association of its graduates in local groups — the oldest, the Phi Beta Kappa Alumni in New York, even antedates the United Chapters and its membership has included many of the outstanding men in public life.

Some associations have done effective work in stimulating scholarship in the preparatory schools by various methods

of bestowing recognition upon schools and students and by sending speakers to address the students on the importance of liberal education and sound scholarship. Such activities, and the spirit of scholarship and liberal interests and friendship which they help to nurture, have given the associations a potent influence.

Most appropriately, therefore, the triennial Council at Atlanta last fall, sixty years after the formation of the oldest graduate association, gave in its new Constitution a more dignified and permanent status to the graduate associations. Now that the hundred or more such groups are integral parts of the Society we can look forward to a large proportion of the 80,000 Φ B K members being associated in this way to promote "scholarship, friendship, and cultural interests."

Facsimile of the first graduate association charter granted. Except for a few verbal changes it is like the new chapter charter adopted by the recent Council. It was designed by Elmer Adler and printed on parchment, 14 x 19 inches, by the Pymson Printers. The key is embossed in gold.

## PHI BETA KAPPA

Founded  
Williamsburg,

Dec. 8, 1776  
Virginia

Φ Ι Α Ο Σ Φ Ι Α Β Ι Ο Τ Ε Τ Β Ε Ρ Η Ν Η Τ Η Σ  
**C H A R T E R**  
T ο

Allen P. Ball	John Kirkland Clark	Harry Emerson Fosdick	Philip J. McCook	John D. Rockefeller, Jr.
William C. Breed	John W. Davis	Walter E. Hope	Nelson G. McCrea	Charles H. Tuttle
Emory R. Buckner	Stephen P. Duggan	Herbert S. Houston	Hoyt A. Moore	Charles A. Vilas
Edwin H. Burgess	Garo Dunn	Charles Evans Hughes, Jr.	Nathan Ostinger	Oscar M. Voorhes
W. Randolph Burgess	James C. Egbert, Jr.	John H. MacCracken	Emmett W. Poindexter	Frederick J. Woodbridge
Nicholas Murray Butler	Edward Ridley Finch	Julian W. Mack	Albert William Putnam	Owen D. Young
	John H. Finley	Langdon P. Marvin	Charles A. Riegelman	

*Members of Φ B K Greeting.*

*WHEREAS*, the liberal principles of our Society should not be confined to any particular place, Men or Descriptions of Men, but extended to the wife and virtuous of whatever community;

*WHEREAS*, we, the Members of Φ B K, as a body dedicated from its very founding in the historic year one thousand seven hundred and forty-six at the College of William and Mary in Virginia to the ideal of excellence in scholarship in the liberal arts and sciences, are willing and desirous to promote

*Therefore*, by virtue of a by-law duly adopted by our representatives in the nineteenth triennial Council of the United Chapters of Phi Beta Kappa, we have decreed the establishment at this time of an association of Φ B K in the City of Greater New York in the State of New York, to be known as the Alpha Association of New York.

*FURTHERMORE*, we have commanded that there issue under the seal of the Society and the hands of the President and the Secretary this Charter in the name of Φ B K.

Accordingly, you and such others as you may hereafter elect and affiliate with yourselves in conformity to the law of Φ B K, and your and their successors in elected and affiliated, are hereby incorporated and established as a separate and coordinate association of the Society and are hereby granted all the powers, privileges, and benefits thereunto appertaining, in as full and ample measure as the members of the existing

associations enjoy; there being at the same time enjoined upon and required of you, in the organization and conduct of the Association and as conditions upon which this Charter is granted, strict compliance with the Constitution and By-Laws of the United Chapters of Phi Beta Kappa, with the acts of the Council and the Senate, and with the Association Constitution herewith transmitted to you; and likewise a devoted effort always to protect the name and key of Φ B K from imitation and indignities and faithfully to promote the purposes of the Society

*In Testimony Whereof*, the President and the Secretary of the United Chapters of Phi Beta Kappa have heretofore set their hands and caused to be affixed its seal this fifteenth day of December,

anno Domini one thousand nine hundred and thirty-seven.

SECRETARY

PRESIDENT

### 30,000,000 Philanthropists

(Continued from page 1)

wealth in the upper brackets. For, while it may be true that there is an irresistible trend in our present-day life to reduce the size of individual fortunes, is it not also true that there is an equally irresistible force at work which is increasing our social sensitiveness? New flashes of social perception are penetrating unaccustomed places.

As a nation we spend 85% of our annual income, we save 12% of it and we give to our philanthropic undertakings only 3% of it, or less. We would be a vastly happier and richer nation if we could be induced to give many times this 3% to efforts in behalf of education, religion, welfare, health, culture, science and character building. Every dollar put into such successful endeavor creates many new dollars worth of permanent material values to our society.

This is true not merely in the sense of a mystical evaluation of spiritual intangibles, but refers specifically to actual dollar values which education and health and religion and character create.

The churches and colleges and character-building institutions and social service agencies, all combined, cost the nation but a small fraction of the twelve billion dollar bill which crime is said to impose involuntarily upon us each year. Racketeering and graft are said to cost the nation billions more. There is but one sure way to lighten this crushing load. It is the way of the church and the college and the character-building institution and the humanitarian agency, all of which seek to make the honorable, unselfish ideal of life more appealing so that fewer and fewer of our young people will be drawn into the pathway of selfishness, ignorance, dishonesty and crime.

## One Minute, Please

THE KEY REPORTER receives \$250 a page for advertising space. More of it could be sold if we had an up-to-date survey of readers — their tastes, occupations, buying power. You can aid materially, therefore, by check-

ing the form below and sending it in — unsigned. Mail it in the enclosed reply envelope (no stamp needed) or send it separately to Phi Beta Kappa, 145 West 55th Street, New York, N. Y.

*Just Fill It in and Mail Today*

Occupation..... Title.....

Married?..... Number of Children?.....

Own car?..... Model?..... Make?.....

Do you smoke cigarettes?..... Cigars?..... Pipe?.....

Did you travel within past year abroad?..... in U. S.?.....

Are you a prospect for: New car?..... Radio?..... Insurance?..... Books?.....

Income: .... Under \$3,000, .... \$3-4,000, .... \$4-5,000, .... \$5-6,000, .... \$6-8,000,  
 .... \$8-10,000, .... \$10-15,000, .... Over \$15,000.

How many months, if any, have you been unemployed during the depression? .....

*Please Tear Off and Mail Now in Enclosed Envelope*

(No stamp needed)

Mr. Whitney H. Shepardson, Treasurer of Φ B K  
145 West 55th Street, New York, N. Y.

Here is my dollar. Please add it to the fund needed by Φ B K.

\$1.00 in cash or money order or check is enclosed.  25¢ added for a sample copy of, or  \$1.50 for a year's trial subscription to, *The American Scholar*.

Name.....

Address.....

## What for U.S.?

THE hounds of fascism are in full cry. The non-warring democracies of Europe are paralyzed with fear for their own safety, while Loyalist Spain and helpless China fight as best they can to delay strangulation. . . .

Now America must make its most difficult and momentous decision since its entry into the World War. Neither government nor citizen of this country wants war. But to escape it, we must quickly adopt a *positive* foreign policy in place of the conditioned neutrality with which we have been threading our way among the world's war shoals. As in every great American crisis, the consensus of liberal opinion must point the wiser way.

But who knows the nature of that consensus? Liberal opinion is drastically divided as to what form a positive foreign policy should assume:

1. Shall this country isolate itself and ban intercourse of every sort with any warring nation? — Or
2. Is Collective Security, involving cooperation with other non-aggressive nations in all peaceful efforts to end present wars and prevent future ones, more likely to safeguard our own security?

## THE *Nation*

oldest and most famous liberal journal in America, convinced that Isolation vs. Collective Security is the most crucial problem confronting our government today, is therefore addressing a

### QUESTIONNAIRE

to all American liberals, to determine the actual proportions of the two opposing camps, both of which want peace and security for the United States.

First results of this national poll appeared in *The Nation* of April 2. Further returns are being presented in succeeding weekly issues, together with statements by people prominent in many fields of public life, special articles by authorities on world affairs, and a concluding summary and breakdown of all returns. *Your ballot is needed to make this poll thoroughly representative.*

**IMPORTANT:** Mail the appended coupon-request for a copy of the QUESTIONNAIRE today, so that you can get your ballot in while the returns are being compiled for publication. . . . If you also wish to obtain a 13-week subscription to *The Nation* beginning with the April 2 issue, and covering the complete presentation of the questionnaire results, simply enclose \$1 with the coupon.



Request for QUESTIONNAIRE

THE NATION, 20 Vesey St., New York City

Please send me by return mail a copy of your Isolation vs. Collective Security Questionnaire and Ballot.  For the enclosed \$1 enter my 13-week subscription.  Enter no subscription for me.)

Name.....

Street.....

City.....

K-4-38